



Treasure Island Community Development (TICD)

PHASE ONE CONSTRUCTION ADVISORY

Clipper Cove Way and Treasure Island Road Intersection

Pedestrian Improvements and MUNI 25 Bus Stop Re-Opening

On Monday July 8th, 2019, Treasure Island Community Development LLC (TICD) will begin work on Clipper Cove Way to realign the intersections with Treasure Island Road and Avenue D, complete pedestrian improvements and re-open MUNI 25-Treasure Island bus stops at the Administration Building. The Island community can expect the following:

Beginning Monday July 8th, 2019:

- Construction personnel, vehicles and equipment and installation of road and crosswalk striping along Treasure Island Road, Clipper Cove Way and Avenue D.
- One-way traffic control with flaggers along Treasure Island Road, Clipper Cove Way and Avenue D during the work day. There will be no work on weekends.

**** UPDATED: At the completion of the workday on Wednesday July 17, 2019: UPDATED ****

- Completion and opening of the pedestrian walkway along Clipper Cove Way between Avenue D and the Causeway pedestrian path to Yerba Buena Island Quarters 10 Park.
- Slight realignment of both inbound and outbound vehicle and cyclist traffic along Clipper Cove Way and along Treasure Island Road will take place the night of July 17, 2019.
- Modification to the existing intersection of Clipper Cove Way and Avenue D to allow for vehicles with a wider turning radius.
- The Treasure Island Administration Building parking lot will remain accessible to vehicles, pedestrians and cyclists at the Clipper Cove Way and Treasure Island Road intersection.
- All other on-Island streets and intersections will remain open.

Re-opening of MUNI 25-Treasure Island bus stops:

- As part of this work, MUNI-25 bus stops will re-open on Clipper Cove Way and Treasure Island Road for both inbound and outbound service in late July or early August. The re-opening of these bus stops will occur after MUNI route operations review and approval of the proposed stop designs and locations. A separate advisory will be issued once the date for re-opening the stops is established.

See site and traffic circulation diagram on the reverse of this flyer.

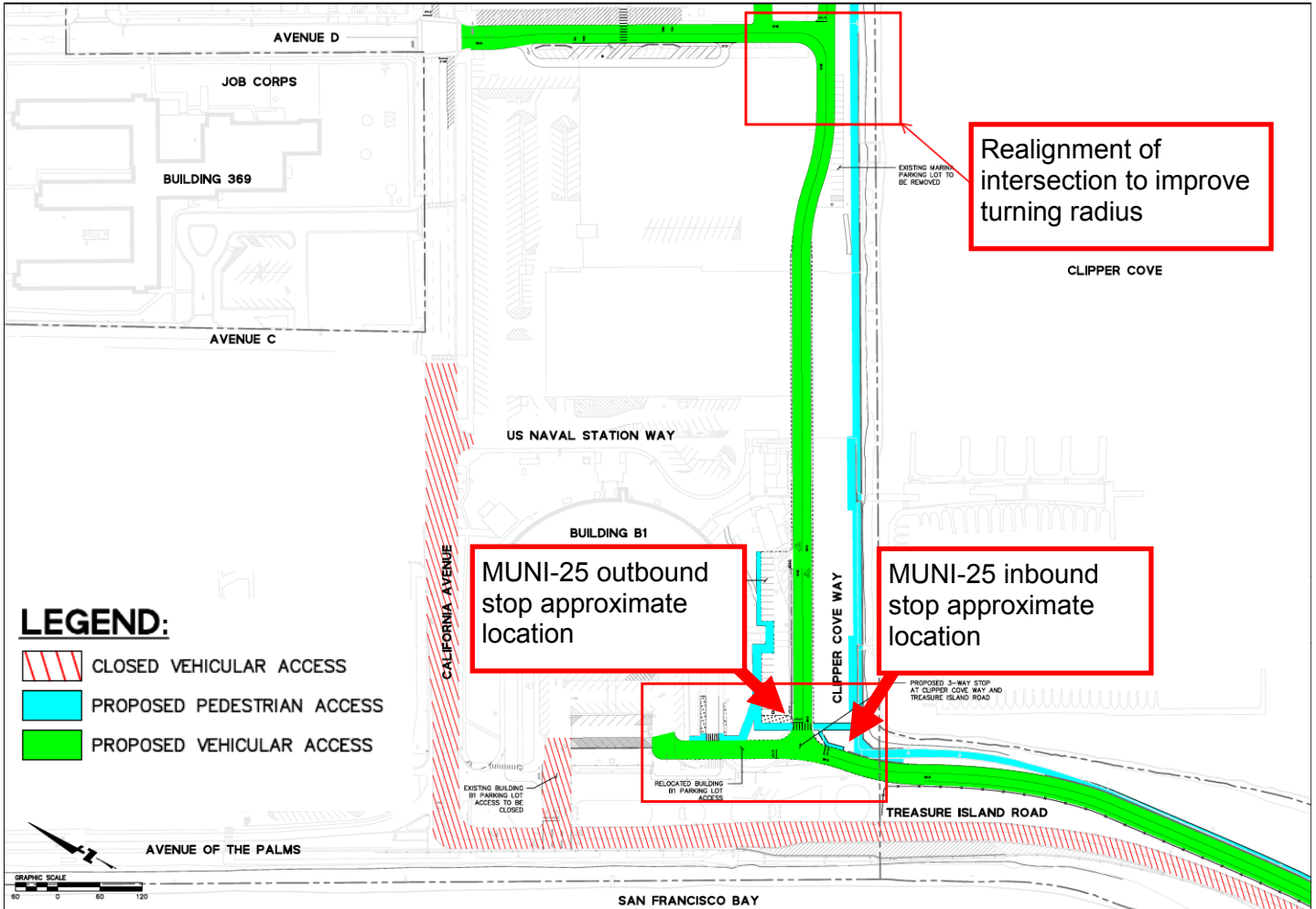
TICD Construction Hotline (888) 469-0797

Please call the TICD Construction Hotline with any questions or concerns related to construction activities associated with the redevelopment of Treasure Island and Yerba Buena Island.

sftreasureisland.org/construction

Treasure Island Community Development (TICD) PHASE ONE CONSTRUCTION ADVISORY

Clipper Cove Way and Treasure Island Road Intersection Pedestrian Improvements and MUNI 25 Bus Stop Re-Opening



Monthly TICD Community Construction Meetings

TICD hosts monthly Community Construction Meetings in order to keep the Island community updated on upcoming construction work and expected on-Island impacts due to the work. All members of the Island community are invited and welcome to attend.

When: Second Wednesday of each month at 6:00 PM

Where: ShipShape Community Center, 850 Avenue I, Treasure Island